



SWISSAIR

9GSR20C18

BOEING 747-300

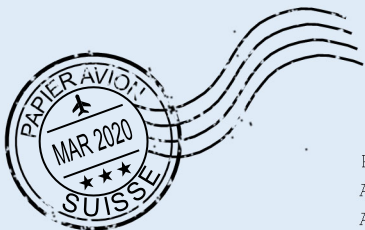
Parts included in this package:

FF	Fuselage Forward	Page 2	TH	Horizontal Stabilizer	Page 5
NG	Nose Landing Gear	Page 2	WS	Wing, Starboard	Page 6
FA	Fuselage Aft	Page 3	GS	Main Landing Gear Strut	Page 6
TV	Vertical Stabilizer	Page 4	CK	Cockpit Windows	Page 6
WB	Wing Box	Page 4	WP	Wing, Port	Page 7
MG	Main Landing Gear	Page 4	WF	Wing Fairings	Page 7
WS	Wing Struts	Page 4			
EC	Engine Cowlings	Page 5	For best results, we recommend that this package		
EE	Engine Exhausts	Page 5	be printed on the following paper stocks:		
EI	Engine Interiors	Page 5	Pages 2-7	Model	Glossy 80lbs

This is a genuine, official Airigami design. This design is provided free-of-charge - you should never, ever pay for this design. However, we strongly urge you to consider donating to Airigami at www.papieravion.org. Airigami was established so that the joy of airline modeling can be available to everybody. Please consider making a donation of \$5, \$20, \$50 or whatever you can to help keep Airigami alive and, best of all, free.

INSTRUCTIONS

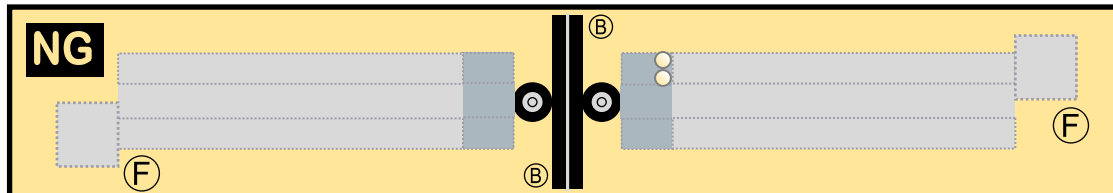
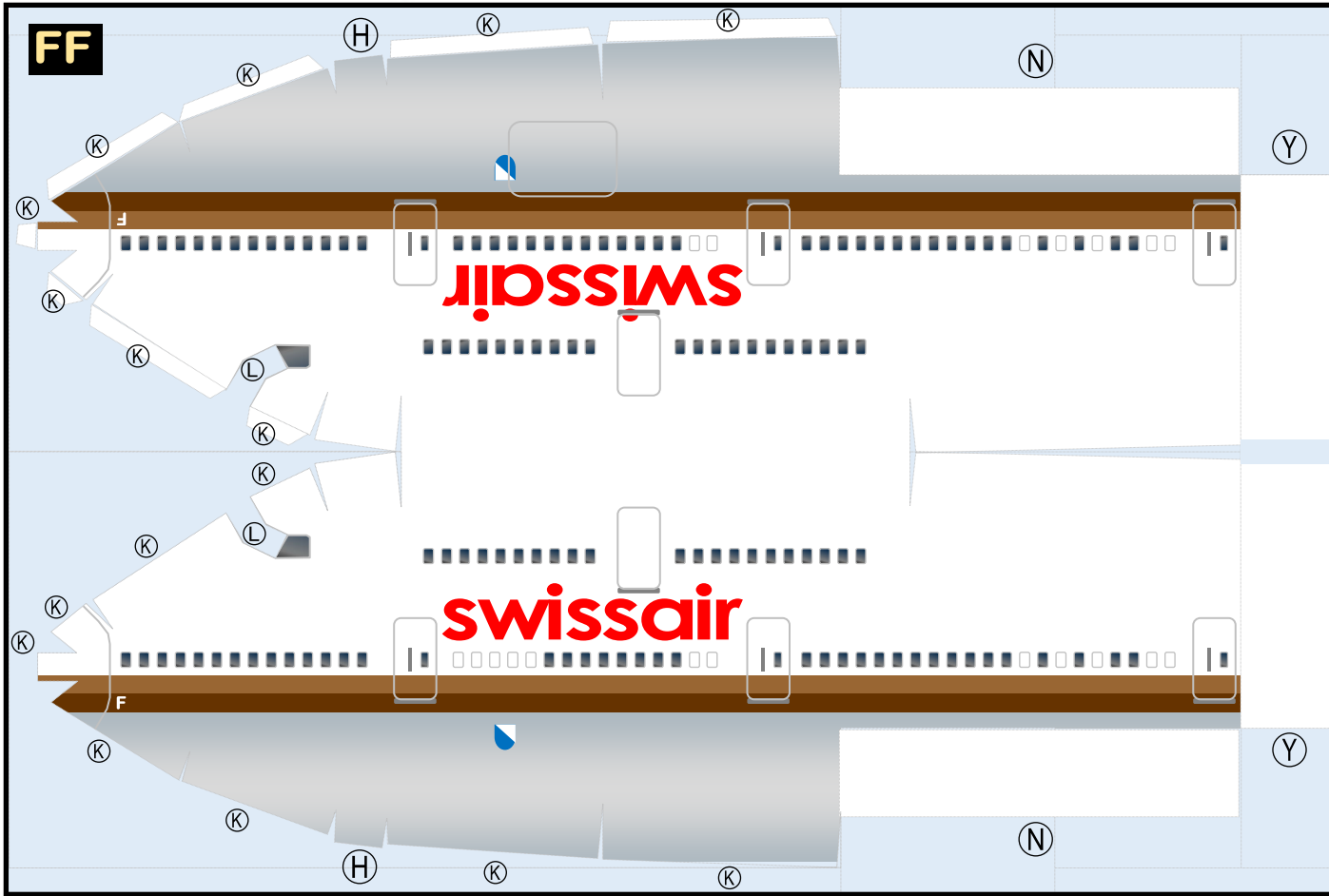
For instructions on how to build this model, refer to manual **INSTRUCTIONS 4B**



BOEING 747-300 / SWISSAIR

9GSWR20C18

Paper-based scale model design system Copyright © 2019 – Airigami / Airline designs and logos are reproduced for Fair Use educational and informational purposes. USE OF THIS TEMPLATE FOR FINANCIAL GAIN IS PROHIBITED.



BOEING 747-300 / SWISSAIR

9GSWR20C18

Paper-based scale model design system Copyright © 2019 – Airigami / Airline designs and logos are reproduced for Fair Use educational and informational purposes. USE OF THIS TEMPLATE FOR FINANCIAL GAIN IS PROHIBITED.

