



JETBLUE AIRWAYS

8GJBU22C16

AIRBUS A320-200

Parts included in this package:

FU	Fuselage	Page 2
WB	Wing Box	Page 2
TV	Vertical Stabilizer	Page 2
TH	Horizontal Stabilizer	Page 2
NG	Nose Landing Gear	Page 2
WG2	Wing, Underside, Port	Page 3
WG3	Wing, Underside, Starboard	Page 3
WG1	Wing, Upper	Page 3
WF	Wing Fairings	Page 3
EI	Engine Interiors	Page 3
EC	Engine Cowlings	Page 3
MG	Main Landing Gear	Page 3

For best results, we recommend that this package be printed on the following paper stocks:

Pages 2-3 Model Glossy 80lbs

This is a genuine, official Airigami design. This design is provided free-of-charge - you should never, ever pay for this design. However, we strongly urge you to consider donating to Airigami at www.papieravion.org. Airigami was established so that the joy of airline modeling can be available to everybody. Please consider making a donation of \$5, \$20, \$50 or whatever you can to help keep Airigami alive and, best of all, free.

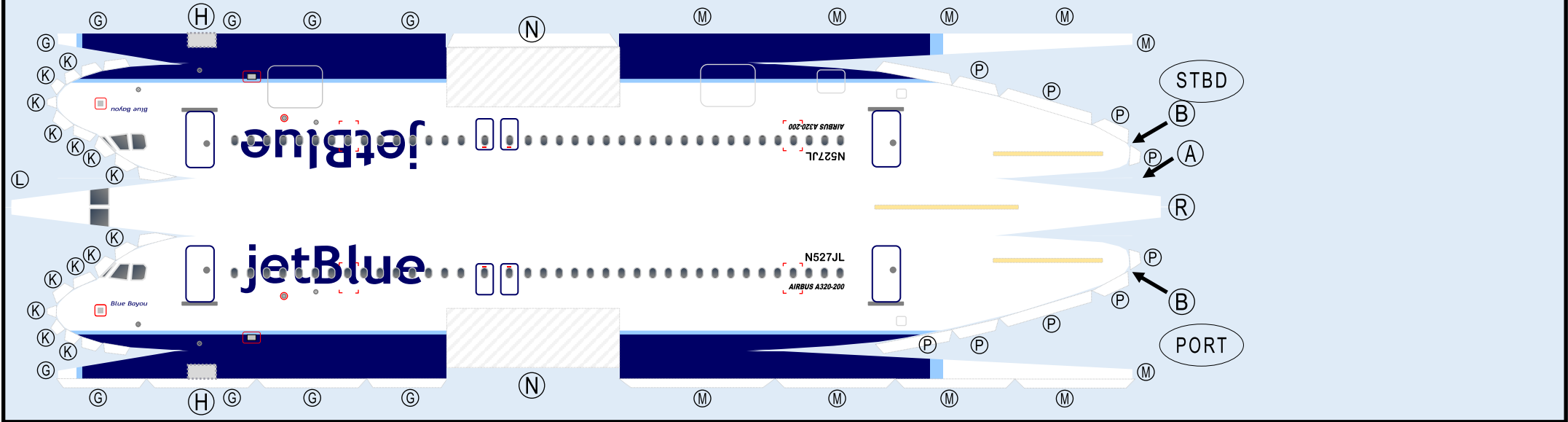
INSTRUCTIONS

For instructions on how to build this model, refer to manual

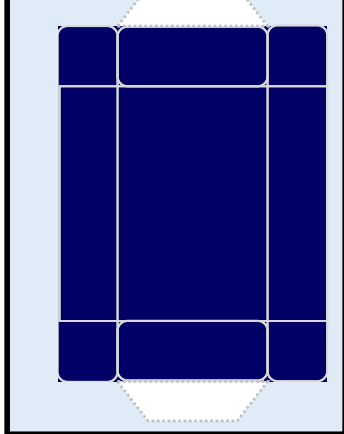
INSTRUCTIONS A

Paper-based scale model design system Copyright © 2022 – Airigami / Airline designs and logos are reproduced for Fair Use educational and informational purposes. USE OF THIS TEMPLATE FOR FINANCIAL GAIN IS PROHIBITED.

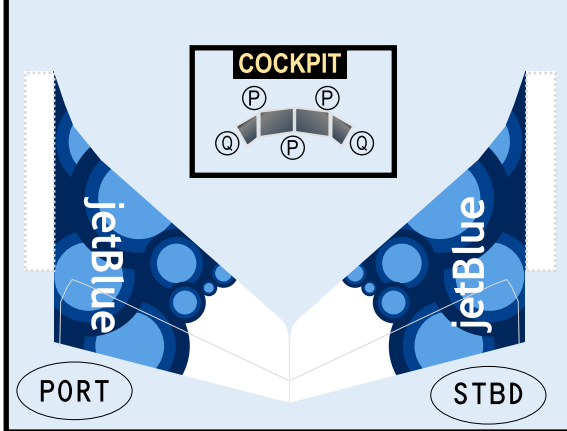
FUSELAGE



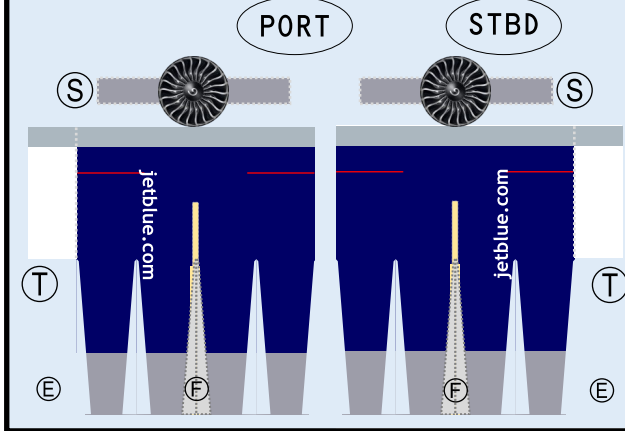
WING BOX



VER. STB.

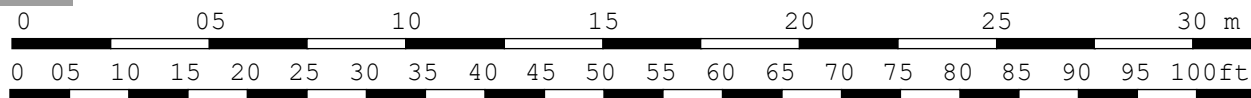


ENGINE COWLING



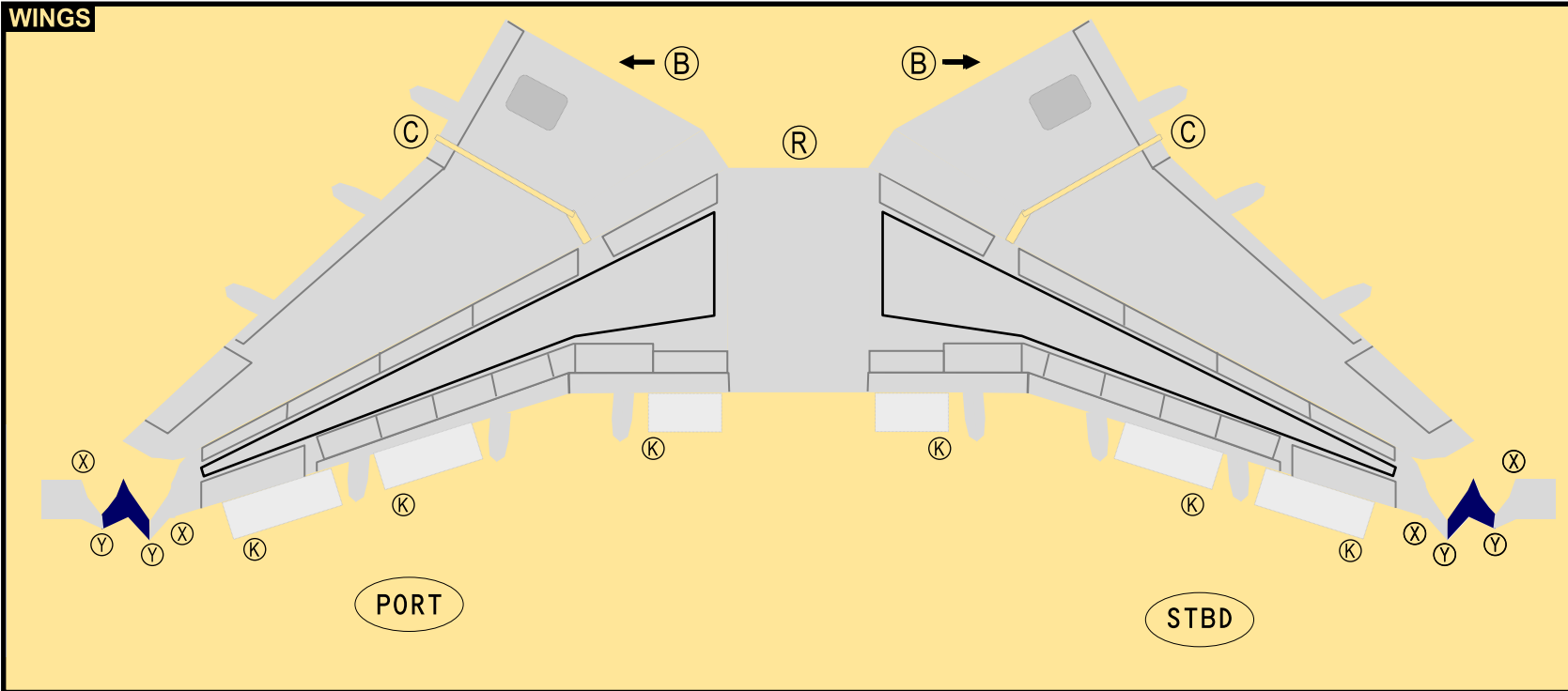
BL

Use this area for ballast (see Instruction Manual for more guidance)

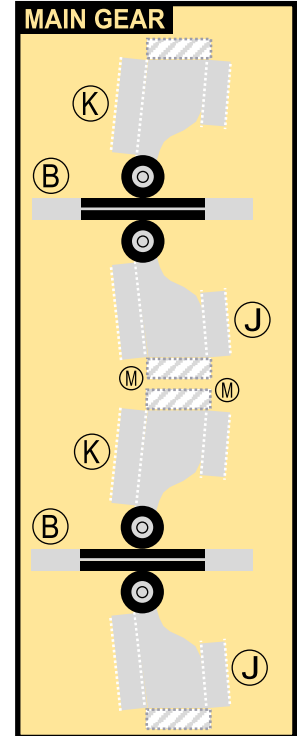


Paper-based scale model design system Copyright © 2022 – Airigami / Airline designs and logos are reproduced for Fair Use educational and informational purposes. USE OF THIS TEMPLATE FOR FINANCIAL GAIN IS PROHIBITED.

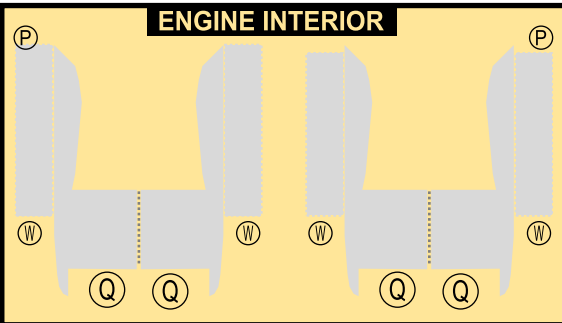
WINGS



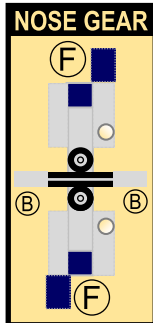
MAIN GEAR



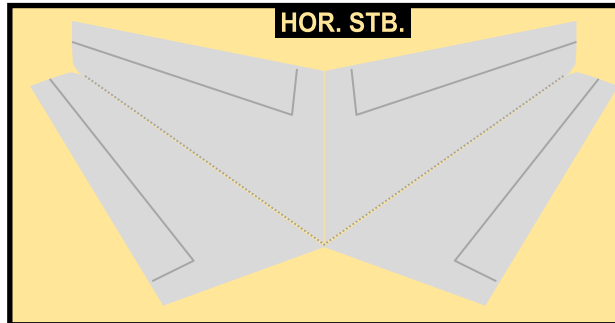
ENGINE INTERIOR



NOSE GEAR



HOR. STB.



9G COWLING

